

Pseudopathology & cranial deformations



G1

G2

G1 / G2 : Post-mortem Deformed skull



G5

G6

G5 : Pseudo trephination

G6 : Pseudo trephination or wound



G8

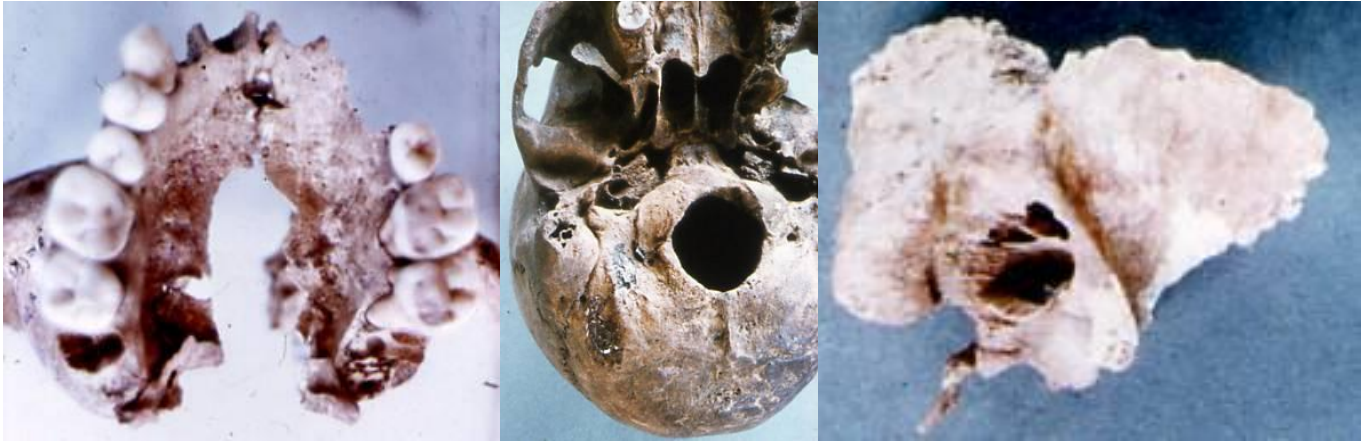
G9

G12

G8: Pseudo axe wound

G9 : Pseudo gumma : slingshot wound

G12 : Pseudo arrow wound of vertebra



G15

G16

G17

G15: Pseudo cleft palate

G16 / G17 : Pseudo mastoiditis



G18

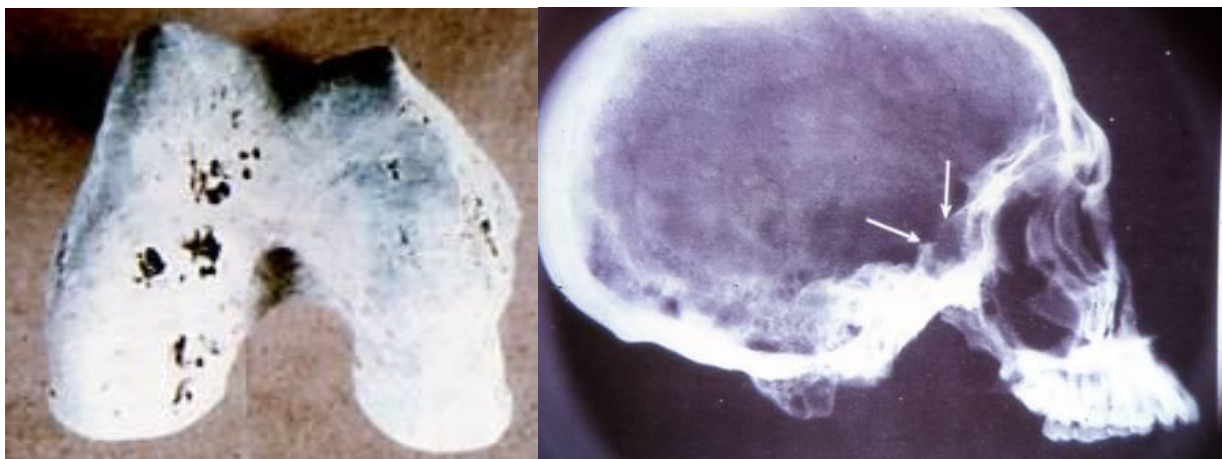
G21

G25

G18: Pseudo mastoiditis

G21: Pseudo caries

G25 : Pseudo osteomyelitis



G26

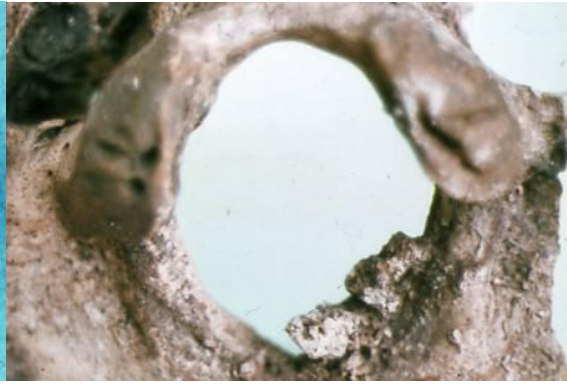
G27

G26 : Pseudo osteochondritis

G27: Pseudo erosion : sella turcica



G31



G32



G35

G31: Pseudo exostosis : atlas

G32: Pseudo exostosis : forzmrn magnum

G35 : Erosion of tooth & jaw by roots



G36



G39



G40



G41



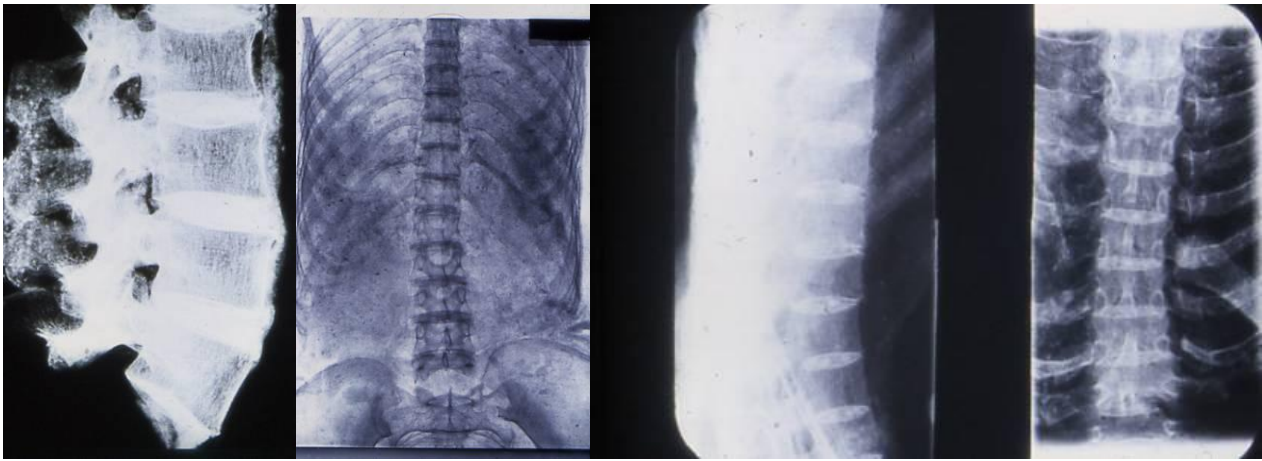
G42

G36 / G39: Pseudo vascular grooves

G40 : Pseudo Harris' 'lines (x-ray)

G41: Pseudo fracture : Red deer

G42 : Pseudo fracture : Red deer(x-ray) / Flandrian



G43

G44

G45

G43 / G44 / G435 : *Pseudo ochronosis*



G48

G49

G50

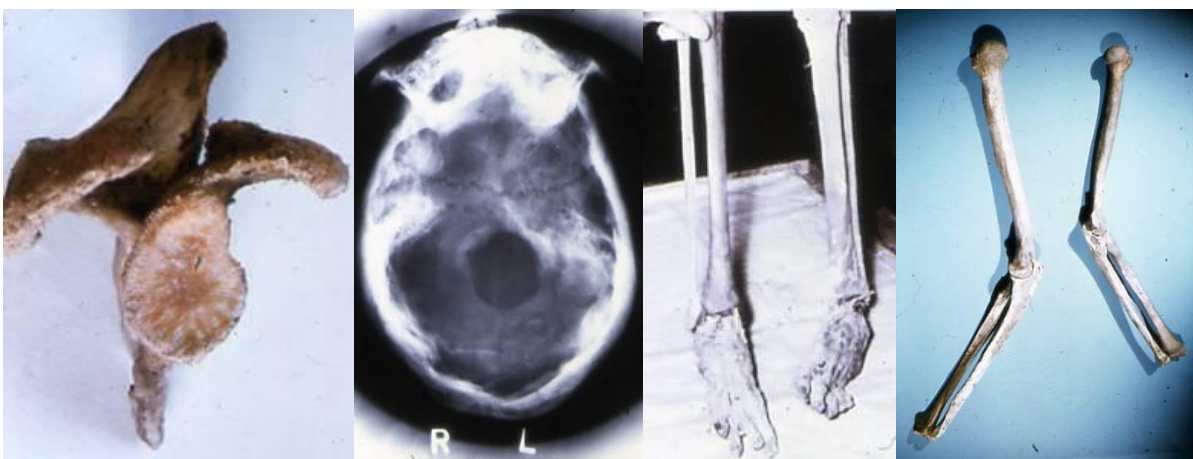
G51

G48: *Rodent gnawing / Haya*

G49: *Rodent gnawing / Cirencester*

G50: *Dog gnawing / Cirencester*

G51: *Dog or mouse gnawing / Cirencester*



G52

G55

G59

G76

G52 : *Mouse gnawing / Langley*

G55: *Pseudo Paget's disease / Gambles Cave*

G59: *Pseudo talipes / Mummy*

G76 : *Pseudo poliomyelitis*

Cranial deformations



G91



G92

G91 / G76 : Cranial deformations



G93



G94

G93 / G94 : Kechipauan deformation



G95



G98



G101

G95 : Cranial deformation / Yucatan

G98 : Cranial deformation

G101 : Aymara cranial deformation / Peru



G105



G106

G105 / G106 : Cranial deformation



G107



G109

G107 : Cranial deformation

G109 : Cranial deformation : plagiocranie / Texas



G110

G111



G113

G110 : Trilobate deformation

G111: Trilobate deformation

G113 : Cranial deformation / Vancouver